

# Port of Brookings Harbor

## WEEKLY OPERATION REPORT

DATE: Sunday 06/11/17 to Saturday 06/17/17

---

### Port Office

1. Port employs nine (9) full-time employees and 1 part-time employee.
2. Currently, the Port is operating businesses RV Park, Boat Yard, Fuel Dock, Marina, Gear Storage and Retail seven days a week.
3. Approximate end of the week QuickBooks balances for the Port:
  - \$ 40,490 General Fund
  - \$ 27,855 Fuel Dock Account
  - \$ 1,405 Cash on Hand/Petty Cash (RV Park, fuel dock and office)
  - \$ 69,750 Total Cash General Fund

---

  - \$ 54,766 Capital Projects Fund
  - \$ 2,519 Debt Service Fund \$62,500 Quarterly (IFA Business Oregon)  
Week 1, next payment due Sept 30  
(\$4,807.69 average each week to reach payment, currently \$0 short)
  - \$ 4,659 Debt Service Fund \$4,659 Monthly (Travel Lift Lease)  
Week 3, payment due 22<sup>nd</sup> each month  
(\$1,164.75 average each week to reach payment, currently \$0 short)
  - \$ 50,038 Revenue Bond Fund \$143,132 Yearly (\$13,012 must remain in fund)  
USDA Loan - \$130,120, payment due Nov 5<sup>th</sup> – Week 32  
(\$2,502.30 average each week to reach payment, currently \$43,048 short)
  - \$ 0 Reserve Fund
  - \$111,982 Total Restricted Cash

---

  - \$181,732 Total Cash as of 6/17/17

---

  - \$ 52,280 Accounts Receivable as of 6/17/17  
1-30 days 29,778 / 31-60 days 9,450 / 61-90 days 10,438 / 90+ 2,614
  - \$ 24,491 Accounts Payable as of 6/17/17  
1-30 days 24,702 / 31-60 days 0 / 61-90 days 0 / 90+ -211
4. Meetings:
  - Phone conversation with George Pollock regarding his vessel Ka'tish in the boat yard. He refuses to pay the new yard rates and stresses he was grandfathered in. We have no records of any guaranteed rates. We have several letters asking him for a work plan from 2014 to get his vessel repaired and out of the yard, but no replies from him. He was given until June 30 to provide a work plan and start

# Port of Brookings Harbor

## WEEKLY OPERATION REPORT

DATE: Sunday 06/11/17 to Saturday 06/17/17

---

- paying the yard rates or remove the vessel for the yard or the Port will take action. Following up with a certified letter of this discussion.
- Tom/Mainbrace regarding his office space and his plans going forward.
  - Misty/Bell & Whistle regarding retail center space plans.
  - Jim Coffey stopped by before heading back to North Bend.
  - Marilyn Busch called regarding the sale of the leased property.
  - Les Stravers regarding demolition of abandon vessels in the boat yard. Told Les the port will need a written proposal and approval for any demolition occurring in the boat yard.
5. Review Spill Prevention Control Countermeasures Plan from Jack Akin/EMC for the fuel tanks and oil storage at the harbor. Current plan is outdated and inefficient to current standards. Email Jack my comments and suggestions (attached).
  6. Talked to Jack Akin/EMC regarding 14" HDPE pipe in the yard, booster pump, dredging next week, Dock Piling Project and fuel dock ramp. Jack said the 14" pipe in the yard would only be used if we used the disposal site 3 miles out in the ocean. The booster pump we have now is not the correct size for any future dredging at this port. Booster pump should be sold. Jack said there is other less expensive ways to dispose of the spoils and we should consider selling the pipe as well.
  7. Preparing informational packet for the newly elected commissioners. Plan to hand the packet to the returning commissioners as well.
  8. Anthony with Washington State University called and wanted to discuss our ice house operations. What kind of production, sales and maintenance costs. He is researching for fisherman in Cathlamet, Washington to provide ice in the region for their salmon fishing. I told him everything about our operation, but he is really looking for an ice making unit like Salmon Harbor Marina (ice making unit that produces 2 tons in 24 hours). I gave him Paul Stallard phone number to contact and North Star Equipment for other possibilities for ice making and delivery.
  9. Talked to Jack Akin/EMC after he talked to Julie/OEM regarding the dock piling project. Jack was checking to make sure FEMA is on track with this project. Julie is waiting for our RFQ and updated JPA. Jack will be sending those items to Julie. Jack also talked to her about the dredge pipe again regarding selling it. Julie told him if we can document costs exceeding the value of the pipe then the port could sell the pipe.
  10. Checked how many stacks of pipe and lengths the Port has in the boat yard. There are 5 stacks of 14" pipe 50' long, 1 stack of floats 25' long, booster pump 14' long and stack of pencil light buoys & anchors 20' long. There was 1 stack of 10" pipe 50' long that is now in Coos Bay. 10" pipe left the yard in Oct 2015. Using the rate for yard days from Oct 2012 to now, the yard day costs come up to 400k. The amount exceeds the value of the pipe, booster pump and equipment (attached).
  11. Stop by Roberts & Associates Surveying to discuss lot line adjustments and for an estimated cost. They will need a title report for each lot to make sure there are no issues with the lots before he could provide an estimate.
  12. Review revised Port Safety Program. Current program is nearly 20 years old!
  13. Received DSL emergency dredging approval at the travel lift ramp.
  14. Revised financial coversheet, added some more information for the commissioner meeting.

### RV Park

1. Installed beach access ramp that is closest to the RV Park entrance. The second ramp is severely damaged and will not be installed this summer. Second access to the beach can be reached at the laundromat area.
2. Landscaping RV Park by Port staff.
3. Someone sprayed rocks from spinning tires into the camp sites per the guest in Site 163 at 2am. Guest requested to be relocated. He was moved to another site.
4. Received report that cable was out at Sites 77 & 78. Cable was check and found no issues.
5. Changed flat tire on golf cart and had it repaired at Les Schwab Tires.

# Port of Brookings Harbor

## WEEKLY OPERATION REPORT

DATE: Sunday 06/11/17 to Saturday 06/17/17

---

### Docks – Basin 1 & 2 and Transient

1. Boat inventory was completed in both basins.
2. Repaired broken waterline at Basin 1 F-42.
3. Exposed waterline next to the water meter vault in the Kite Field to try and locate the water leak. Found the leak under the existing backflow preventer that goes to the docks. At this location, there are two meters and two separate waterlines. One goes to the docks and the other is for the restrooms and Kite Field spigots. The waterline going to the docks has a backflow device that was built with galvanized pipe. The galvanized pipe has rusted and a small leak has developed at a joint. This will need to be rebuilt with the proper piping soon. The second waterline, one that was broken, we found a buried pressure reducer and another smaller backflow preventer that is also leaking water. For now, we have isolated the restrooms and installed spigots to water the Kite Field for the events. All the backflow preventers and piping will need to be replaced when the upgrade to the restroom occurs.
4. Repaired leaking spigot inside men's restroom at Commercial Basin. Gate valve for the main waterline going into the restroom is frozen open. Tried to close it to make the repair and ended up shutting down the entire commercial basin docks. Adding gate valve replacement to the list of repairs.
5. Tighten loose docks bolts and replaced one dock bolt on P-4/6 finger.
6. Full Spectrum Landscape worked at the Kite Field, boat yard and along Boat Basin Road.
7. Removed large amount of trash placed on the ground including a freezer at transient dock. This material showed up when vessels Last Straw, Excalibur, Pacific Surveyor and Katalina Phan were at the transient dock. Trash was dumped below a sign that says no dumping and directs them to the trash bins (photos attached).
8. Removed another freezer dumped at commercial basin trash bins (photo attached).

### Boat Yard

1. Haul out F/V Good Fishing II and block.
2. Vessel Tally Ho was loaded on a transport truck. The truck had engine problems, so the trailer and boat was left in the yard until the repair can be made on the truck. Truck returned Friday (06-16-17) night and removed the vessel from the yard (photo attached).
3. Billeter Marine dropped off trailer with lattice boom sections in the yard. Getting ready to mobilize the crane for dredging.
4. Received truckload of straw bales for the dredge containment area. Laid out the bales surrounding the spoil area.

### Maintenance Yard / Shop

1. Fabricated new anchor and repaired handrail for one beach access ramp.
2. Replaced damaged radiator hose on Eq# 4603 P&H Crane and then found a hole in the radiator. During one of the crane jobs, one of the outriggers gave way. Outrigger has a hydraulic problem.

### Boat Launch Parking Lot

1. Fish Station cleaned by Port staff as needed.
2. Repaired leaking spigot inside men's restroom.

### Commercial Fishing Docks / Gear Storage

1. Completed two crane jobs for commercial fleet this week.
2. Corps dredge Yaquina returned and finished dredging the channel and harbor entrance. Operator from Yaquina came into the office requesting to move the bumper up the steel wall where we had it placed two years ago. Makes it easier for them to turn the vessel. I told him we will get it done next year. (photo attached).

# Port of Brookings Harbor

## WEEKLY OPERATION REPORT

DATE: Sunday 06/11/17 to Saturday 06/17/17

---

### Retail / Boardwalk

1. Trash removal by Port staff as needed throughout the Port.
2. Restroom cleaning and restocking by Port staff every day.
3. Retail sewer pump float was found stuck in the on position. Realigned float and removed shopping bag full of debris from the tank.
4. Repaired leaking fitting at retail restroom urinal.
5. Someone ran over a light pedestal and drove onto the Boardwalk behind Bell & Whistle. We have the incident on our security camera. Individual got out of the vehicle and pulled the pedestal from under the vehicle and drove off. Then the individual waited at Kathy's Corner Market and a female came out and got into the vehicle and they left without reporting the damage to the Port. There will be damage to the front driver's side of the vehicle. (Incident report & photo attached)
6. Barricaded the damaged light pedestal, turned off the power and cleaned up the broken glass. Gowman Electric said the wiring needs to be repaired. The pedestal is also broken which will require some welding.
7. Saturday Market was held on the boardwalk today organized by Chetco Brewing. Moved barricades were not replaced. Trash can was left overflowing on the boardwalk.

### Fuel Dock

1. 9,793 gallons of diesel and 556 gallons of gas was pumped this week.
2. Approximate inventory in the aboveground tanks for diesel 9,883 and non-ethanol 1,885.
3. Carson Oil delivered 15,290 gallons of diesel this week.
4. Emailed Don and Bob at Tyree Oil requesting for an updated Spill Prevention Plan. Their plan is two years outdated.
5. Emailed KC at Carson Oil for their Spill Prevention Plan and to let him know to notify the port 24 hours prior to any over the dock transfers. KC plans to hand deliver the spill plan next Tuesday.

### Security

1. South Coast Knight Security is patrolling the Port properties. Reports attached for review.
2. A guy with bunny ears and rainbow pants was panhandling outside Kathy's Corner Market. Port was notified by tenants. Port informed Sheriff Department substation and they had the guy removed from the property.

### FEMA / OEM PW's

1. None

### Miscellaneous

1. Toolbox safety meeting was held with staff. Topic was on lockout/tagout.
2. Dave Hoover Construction continues working on dock crane and foundation frame for the second unit. Waiting for the electrician to hook up the power (photo attached).

Port of Brookings Harbor  
Balance Sheet  
As of June 17, 2017

	<u>Jun 17, 17</u>
<b>Checking/Savings</b>	
<b>1001 · CASH &amp; CASH EQUIVALENTS</b>	
1002 · General Funds Ckg 3634	40,490.23
1003 · FUEL DOCK	27,854.73
<b>Total 1001 · CASH &amp; CASH EQUIVALENTS</b>	<u>68,344.96</u>
<b>1004 · CASH/EQUIVALENTS - RESTRICTED</b>	
1005 · Capital Projects Fund 8018	54,766.00
1007 · USDA BOND MM 9529	50,038.30
1008 · Debt Service Fund MM 8627	
IFA LOAN SAVINGS	2,500.00
TRAVEL LIFT	4,659.00
1008 · Debt Service Fund MM 8627 - Other	19.03
<b>Total 1008 · Debt Service Fund MM 8627</b>	<u>7,178.03</u>
<b>Total 1004 · CASH/EQUIVALENTS - RESTRICTED</b>	<u>111,982.33</u>
<b>1012 · Cash on Hand/Petty Cash</b>	
1014 · SAFE/ONSITE DRAWER	404.50
1015 · Fuel Dock Cash Drawer	200.00
1018 · RV Park Cash Drawer	600.00
1022 · Office/Danielle	100.00
1023 · Office/Skylar	100.00
<b>Total 1012 · Cash on Hand/Petty Cash</b>	<u>1,404.50</u>
<b>Total Checking/Savings</b>	<u>181,731.79</u>

#	Priority	Description	Cost Estimate	Location	JUNE																				
					A = Actual					2 Week Look-Ahead															
					5	6	7	8	9	10	11	12	13	14	15	16	17	18	19	20	21	22	23	24	25
1	1	Repair Damaged Electric Pedestal		Boardwalk																					
2	1	Boat Haul In/Out	-	Boat Yard				A				A													
3	1	Tally Ho Removal from Boat Yard (June 14 load on trailer)		Boat Yard		A	A					A	A												
4	1	Install Docks to Travel Lift Ramp for Exiting Off Boats	1,500	Boat Yard																					
5	1	Dredging at Travel Lift Ramp (Start June 19) Prep work start June 12	25,000	Boat Yard		A	A					A	A												
6	1	Crane Mob from Billeter Marine		Boat Yard																					
7	1	Dredge at Travel Ramp and Storm Drain		Boat Yard																					
8	1	Crane Work for Commercial Fleet	-	Commercial Docks		A								A											
9	1	Remove Camel Bumper on Steel Wall for Corps Dredge		Commercial Docks																					
10	1	Repair Broken Waterline to Ice House and Commercial Receiving Docks		Commercial Docks				A	A																
11	1	Corps Dredging Channel		Commercial Docks	A									A	A	A									
12	1	Repair Loose Cleats Basin 2 at P-6		Docks		A																			
13	1	Removed Damage Utility Hangers Basin 2 between Docks I & J		Docks		A																			
14	1	Repair Broken Waterline Basin 1 F-42		Docks								A													
15	1	Tighten Loose Dock Bolts Basin 2 P 4/6 Finger		Docks										A											
16	1	18 Repair/Upgrade Kite Field Restroom	20,506	Kite Field																					
17	1	Repaired Water Leaks in Multiple Restrooms		Port																					
18	1	22 Repair Slugs N Stones Sewer Pump and Enclosure	3,086	Retail																					
19	1	23 Replace Main Retail Sewer Tank and Enclosure (June - July)	30,000	Retail																					
20	1	Repair Kenny's Boat Shop Door	2,500	Retail		A																			
21	1	Install East Access Ramp to Beach (Repair)		RV Park				A				A	A	A											
22	1	Replaced 30amp plug at Site 72 and 50amp at Site 9 (Gowman)		RV Park	A																				
23	2	Commissioner Meeting at Best Western 7pm		Best Western																					
24	2	Removed Dock Box from Basin 1 C-33		Docks					A																
25	2	Separate Main Dock Basin 1		Docks																					
26	2	Install Piling Hoops / Temp Piling Hoops - Basin 1		Docks																					
27	2	37 Repair Sinkholes in Parking Lot	3,791	Fishing Pier																					
28	2	Commissioner Meeting at Port Office - Budget Hearing 6pm		Port Office					A																
29	2	Clean Rain Gutters on Retail Center Buildings		Retail																					
30	2	Remove Equipment and Supplies out of Laundromat Building		RV Park																					
31	2	Repair, Clean and Paint Fence		RV Park																					
32	3	62 Landscape Maintenance	520	All		A	A																		
33	3	63 Trash Pickup and Removal	736	All		A	A																		
34	3	64 Restroom Cleaning	806	All		A	A																		
35	3	65 Fish Station Cleaning	447	All		A	A																		
36	3	44 Install Drainage System at Fish Station per DEQ	1,112	Boat Parking Lot		A	A																		
37	3	45 Build Enclosure for Launch Machine	2,059	Boat Parking Lot																					
38	3	49 Repair Storm Drain at N-O Dock Ramp	1,673	Docks																					
39	3	Replace Broken Gate Valve on Main Waterline in Commercial RR		Docks																					
40	3	52 Cleanup Gear Storage (Near Fuel Tanks)	5,783	Gear Storage																					
41	3	54 Repair Water Leak at Kite Field (Line going to restroom Temp Fix)	2,000	Kite Field																					

Gary

---

**From:** Gary <gary@portofbrookingsharbor.com>  
**Sent:** Monday, June 12, 2017 3:14 PM  
**To:** emc@emcengineersscientists.com  
**Subject:** RE: SPCC  
**Attachments:** SPCC PLAN-POB.doc; Page 24.pdf

Jack, my additional comments on the SPCC:

Page 10 updated. Please remove what is not required.

Page 11 updated fuel service-high dock section.

Page 14, removed "manned 24 hours a day".

Page 15, under Response Action, bullet 4, added "when" safe.

Page 15, under Response Action, bullet 10, Port does not have "Operations and Storm Water Log Books". Do you have a sample of such log book? Assuming that is required by DEQ.

Page 15, under Response Action, bullet 11, Port does not have "storm water control gates". Is the Port required to have those? Because we don't.

Page 16, Local Fire Department changed to Harbor Fire Department

Page 16, Hospital changed to Curry Medical Service

Page 17, added N/A to Table Heading

Page 24, see attached PDF

Page 33, # 3, are you sure that is a No? Isn't the harbor and Chetco River considered sensitive environments? I know we don't have the quantity of 1 million gallons, but the question says "and". Or because we don't have the quantity it's all null and void = No?

When this is Plan is ready to go, I want our Board to review and approve it. Then, who does the initial training of this Plan?

Let me know if you have any questions.

Gary

**From:** Gary [mailto:gary@portofbrookingsharbor.com]  
**Sent:** Wednesday, June 07, 2017 2:42 PM  
**To:** emc@emcengineersscientists.com  
**Subject:** RE: SPCC

Jack, see response below in red. Gary

**From:** [emc@emcengineersscientists.com](mailto:emc@emcengineersscientists.com) [mailto:[emc@emcengineersscientists.com](mailto:emc@emcengineersscientists.com)]  
**Sent:** Monday, June 05, 2017 9:52 AM  
**To:** Gary <[gary@portofbrookingsharbor.com](mailto:gary@portofbrookingsharbor.com)>  
**Subject:** SPCC

Hey Gary...please see the attached draft SPCC.

I have reviewed the Tyree Plans (briefly) and didn't see some specifics I need.

So I need a general description of the over-the-water fueling done off the high dock, including:

1. Mobile tank used to fuel the boat(s) (capacity...trucked on wheels?) **Truck (4,000 gallons) and transfer (4,000 gallons)**
2. How much fuel is provided per events **Anywhere from 1,000 to 8,000 gallons.**
3. Frequency of events (once per week, month,etc) **Varies per demand of commercial fishing vessels. Sometimes there can be three or four in one week or down to none for weeks. Depends on weather and season too.**

I think the SPCC plan provided by Tyree gives me the rest.

Also, do you guys have any inspection sheets for the tank storages? **See attached.**

Call if any questions.

Thanks Gary

Jack (John) Akin, MS, PE, IC, HMS, AI  
EMC-Engineers/Scientists, LLC  
Office: (541) 474-9434 Cell: 541-261-9929  
Fax: (541) 261-9929



Virus-free. [www.avast.com](http://www.avast.com)



# Spill Prevention Control and Countermeasure (SPCC) Plan

## 40 CFR 112

### PORT OF BROOKINGS

16340 Lower Harbor Rd, Brookings, OR 97415



Prepared By: \_\_\_\_\_

**Jack (John) Akin, MS, PE**

Reviewed and Approved By: \_\_\_\_\_

**Gary Dehlinger, Port Manager**

May, 2017

## TABLE OF CONTENTS

1.0 Introduction .....	4
1.1 Purpose .....	4
1.2 Substantial Harm Determination .....	4
1.3 Plan Layout .....	5
2.0 Port Description .....	6
3.0 Certification Statements (§112.6(a)(1) & (40 CFR 112.3(d)) .....	6
3.1 Owner/Operator Certification (§112.6(a)(1)) .....	8
3.2 Professional Engineer Certification (40 CFR 112.3(d)) .....	8
4.0 Record of Plan Review and Amendments, Technical Amendments, Applicable Requirements and Professional Engineer Certification (§112.5(a), (d) and (§112.6(b)(2)) .....	9
5.0 Plan Requirements .....	9
5.1 Port Diagram (§112.7(a)(3)) .....	9
5.2 Oil Storage Containers (§112.7(a)(3)(i)) .....	10
5.3 Oil Spill Control (§§112.7(a)(3)(ii) and (iii)) .....	11
5.4 Inspections, Testing, Recordkeeping and Personnel Training (§§112.7(e) and (f), 112.8(c)(6) and (d)(4), 112.9(c)(3), 112.12(c)(6) and (d)(4)) .....	12
5.5 Security - §112.7(g) .....	13
5.6 Emergency Procedures and Notifications (§112.7(a)(3)(iv) and 112.7(a)(5)) .....	14
5.7 Contact List (§112.7(a)(3)(vi)) .....	15
5.8 NRC Notification Procedure (§112.7(a)(4) and (a)(5)) .....	15
5.9 SPCC Spill Reporting Requirements (Report within 60 days) (§112.4) .....	16
6.0 General Rule Requirements For Onshore Facilities (§§112.8(b) through (d), 112.12(b) through (d)) .....	16
6.1 Containment Impracticability (§§112.7(d)) .....	18
6.2 Inspections, Testing & Recordkeeping (§§ 112. 7(e), 112. 8(c)(6) & (d)(4), 112.9(c)(3), 112.12(c)(6) & (d)(4)) .....	18
7.0 Personnel Training (§§ 112. 7(f)) .....	19
8.0 Port Tank Car and Tank Truck Loading/Unloading Rack (excluding offshore facilities, farms, and oil production facilities) (§§ 112. 7(h)) .....	19
9.0 Field Constructed Aboveground Containers (§§ 112. 7(i)) .....	20
10.0 Onshore Facilities (excluding production) (§§ 112. 8(b) through (d)) .....	20

ATTACHMENT 1 – Five Year Review and Technical Amendment Logs .....24  
 ATTACHMENT 1.1 – Five Year Review Log .....24  
 ATTACHMENT 1.2 – Technical Amendment Log .....25  
 ATTACHMENT 2 – Oil Spill Contingency Plan and Checklist .....26  
 ATTACHMENT 3 – Inspections, Dike Drainage and Personnel Training Logs .....27  
 ATTACHMENT 3.1 – Inspection Log and Schedule .....27  
 ATTACHMENT 3.2 – Bulk Storage Container Inspection Schedule .....28  
 ATTACHMENT 3.3 – Dike Drainage Log .....29  
 ATTACHMENT 3.4 – Oil-handling Personnel Training and Briefing Log .....30  
 ATTACHMENT 4 – Discharge Notification Form .....31  
 ATTACHMENT 5 – Substantial Harm Determination .....32  
 ATTACHMENT 6 – Digitized and Annotated Photos.....Attached As Shown  
 ATTACHMENT 7 – 40 CFR 112 .....Attached As Shown  
 ATTACHMENT 8 – Maps.....Attached As Shown

Table G-1 Five Year Review and Technical Amendments (§112.5(a)(2)(i))  
 and (§112.6(b)(2) and (5)) .....9  
 Table G-2 Port Diagram .....9  
 Table G-3 Oil Storage Containers and Capacities .....10  
 Table G-4 Oil Spill Control .....11  
 Table G-5 Inspections, Testing, Recordkeeping and Personnel Training .....12  
 Table G-6 Implementation and Description of Security Measures .....13  
 Table G-7 Description of Emergency Procedures and Notifications .....14  
 Table G-8 Contact List .....15  
 Table G-9 NRC Notification Procedure .....15  
 Table G-10 General Rule Requirements for Onshore Facilities .....17  
 Table G-11 Determination of Impracticability and Provision of  
 Alternative Measures .....18  
 Table G-12 Inspections, Testing and Recordkeeping .....18  
 Table G-13 Personnel Training and Discharge Prevention Procedures (§§ 112. 7(f)).....19  
 Table G-14 Loading/Unloading Racks .....19  
 Table G-15 Field Constructed Aboveground Containers .....20  
 Table G-16 General Rule Requirements for Onshore Facilities .....22  
 Table G-17 Review and Evaluation of SPCC Plan for Port .....24  
 Table G-18 Description and Certification of Technical Amendments .....25  
 Table G-19 Checklist of Development and Implementation Criteria for State, Local  
 and Regional Oil Removal Contingency Plans (§109.5) .....26  
 Table G-20 Inspection Log and Schedule .....27  
 Table G-21 Bulk Storage Container Inspection Schedule .....28  
 Table G-22 Dike Drainage Log .....29  
 Table G-23 Oil-Handling Personnel Training and Briefing Log .....30  
 Table G-24 Information provided to the National Response Center in the  
 Event of a Discharge .....31

## **1.0 Introduction**

Oil spill prevention regulations promulgated by the Environmental Protection Agency (EPA) in 40 CFR 112 require owners and operators of onshore and offshore facilities, which because of their location, could reasonably be expected to discharge oil in harmful quantities into or upon waters of the United States or adjoining shorelines, to prepare and implement a Spill Prevention Control and Countermeasure (SPCC) Plan.

The Federal guidelines specify that 40 CFR Part 112 is applicable to oil of any kind, in any form, including, but not limited to petroleum, fuel oil, sludge, oil refuse, and oil mixed with wastes other than dredge spoils. For the purpose of developing this plan, petroleum derived hydrocarbons, which are liquids between 0°C and 35°C at pressures near 760mm Hg, are included.

Further, the regulations specify that a minimum above ground storage capacity for which the plan must be prepared is one thousand three hundred twenty (1,320) U.S. gallons for two or more individual containers in aggregate with a common storage area or six hundred sixty (660) U.S. gallons for an individual container.

Under EPA regulations the SPCC Plan must address procedures, methods, equipment, and other requirements necessary to prevent the discharge of oil and other specified pollutants from a facility into local bodies of water. In accordance with these requirements, Port of Brookings has developed a plan for its facilities, the main office for which is located at 16340 Lower Harbor Rd, Brookings, Oregon which is presented in this document.

### **1.1 Purpose**

The Port's SPCC Plan is a guide which identifies the Port's regulatory obligations, facility design features, operating procedures, and actions to be taken in the event of a spill episode. Also; the plan serves, in conjunction with other pertinent manuals, as a reference for spill training.

For the State of Oregon, the preparation of facility oil spill prevention and emergency response plans is required for onshore facilities defined as follows: "any structure, group of structures, equipment, pipeline, or device, other than a vessel located on or near the navigable waters of the state that are used for producing, storing, handling, transferring, processing, or transporting oil in bulk and that is capable of storing or transporting 10,000 or more gallons of oil." In addition to fulfilling requirements of 40 CFR part 112, this SPCC Plan is used as a reference for oil storage information and testing records, as a tool to communicate practices on preventing and responding to discharges with employees, as a guide to Port inspections, and as a resource during emergency response.

### **1.2 Substantial Harm Determination**

The Port management has determined that this Port does not pose a risk of substantial harm under 40 CFR part 112, as recorded in the "Substantial Harm Determination" included in **ATTACHMENT 5** of this Plan.

DREDGE PIPE STORED IN BOAT YARD

#	Description	Stack #	2012	2013	2013	2014	2015	2016	2016	2017	Total to Date
1	14" Dredge Pipe	1	2,898.00	5,701.50	6,072.00	12,045.00	12,045.00	11,055.00	8,250.00	8,250.00	59,616.50
2	14" Dredge Pipe	2	2,898.00	5,701.50	6,072.00	12,045.00	12,045.00	11,055.00	8,250.00	8,250.00	59,616.50
3	14" Dredge Pipe	3	2,898.00	5,701.50	6,072.00	12,045.00	12,045.00	11,055.00	8,250.00	8,250.00	59,616.50
4	14" Dredge Pipe	4	2,898.00	5,701.50	6,072.00	12,045.00	12,045.00	11,055.00	8,250.00	8,250.00	59,616.50
5	14" Dredge Pipe	5	2,898.00	5,701.50	6,072.00	12,045.00	12,045.00	11,055.00	8,250.00	8,250.00	59,616.50
6	10" Dredge Pipe	6	2,898.00	5,701.50	6,072.00	12,045.00	9,042.00	-	-	-	35,758.50
7	Pipe Floats	7	1,449.00	2,850.75	3,036.00	6,022.50	6,022.50	5,527.50	775.00	4,125.00	29,808.25
8	Pencil Light Buoys & Anchors	8	1,159.20	2,280.60	2,428.80	4,818.00	4,818.00	4,422.00	620.00	3,300.00	23,846.60
9	Booster Pump	9	811.44	1,596.42	1,700.16	3,372.60	3,372.60	3,095.40	434.00	2,310.00	16,692.62
10			22,819.64	42,949.77	45,609.96	88,497.10	85,495.10	70,335.90	11,595.00	53,002.00	404,188.47

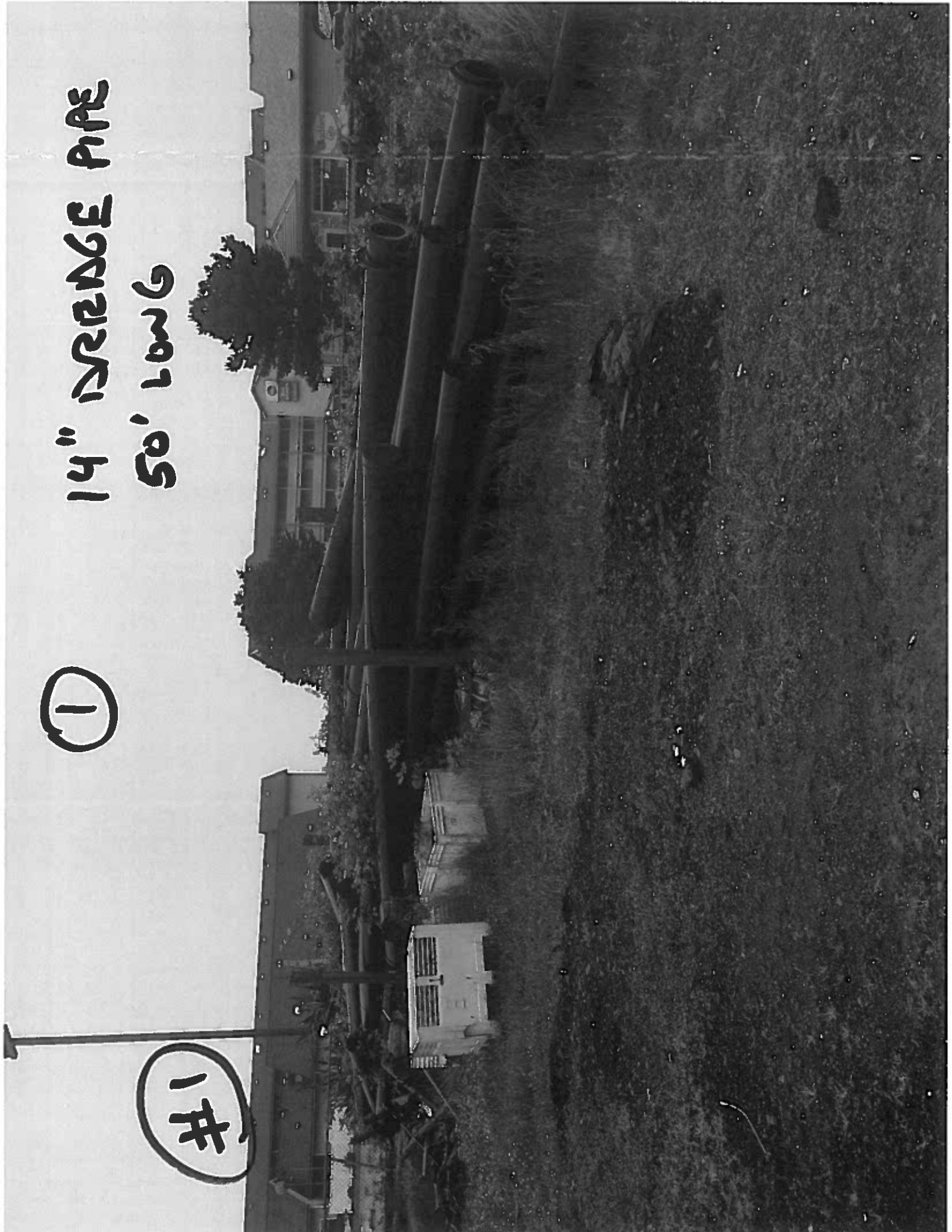
Rate changed July 1

Rate changed Dec 1

①

14" AVERAGE PIPE  
50' LONG

1#



#2

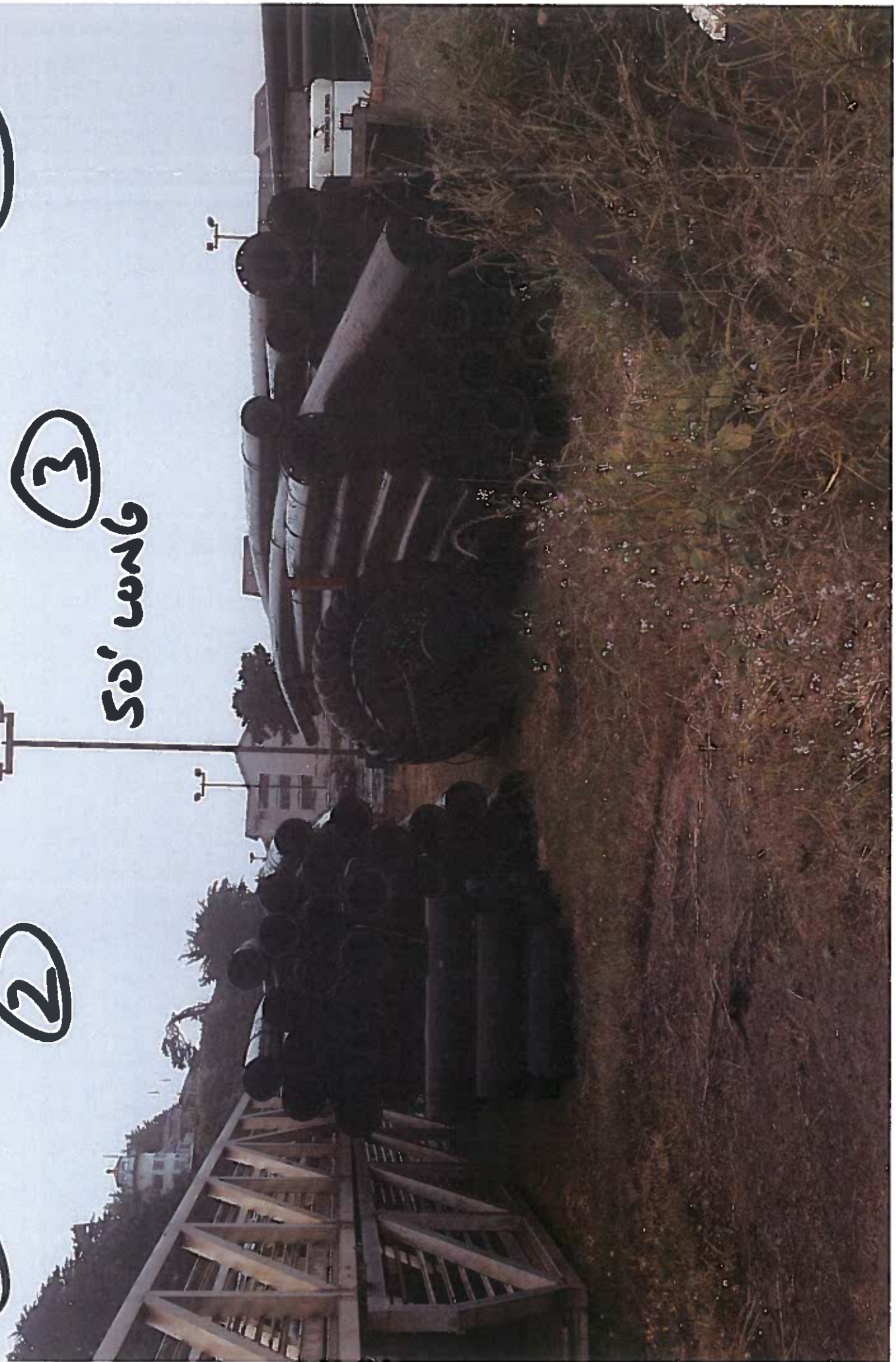
2

14" DRAINAGE PIPE

#3

3

50' LONG



#1

4

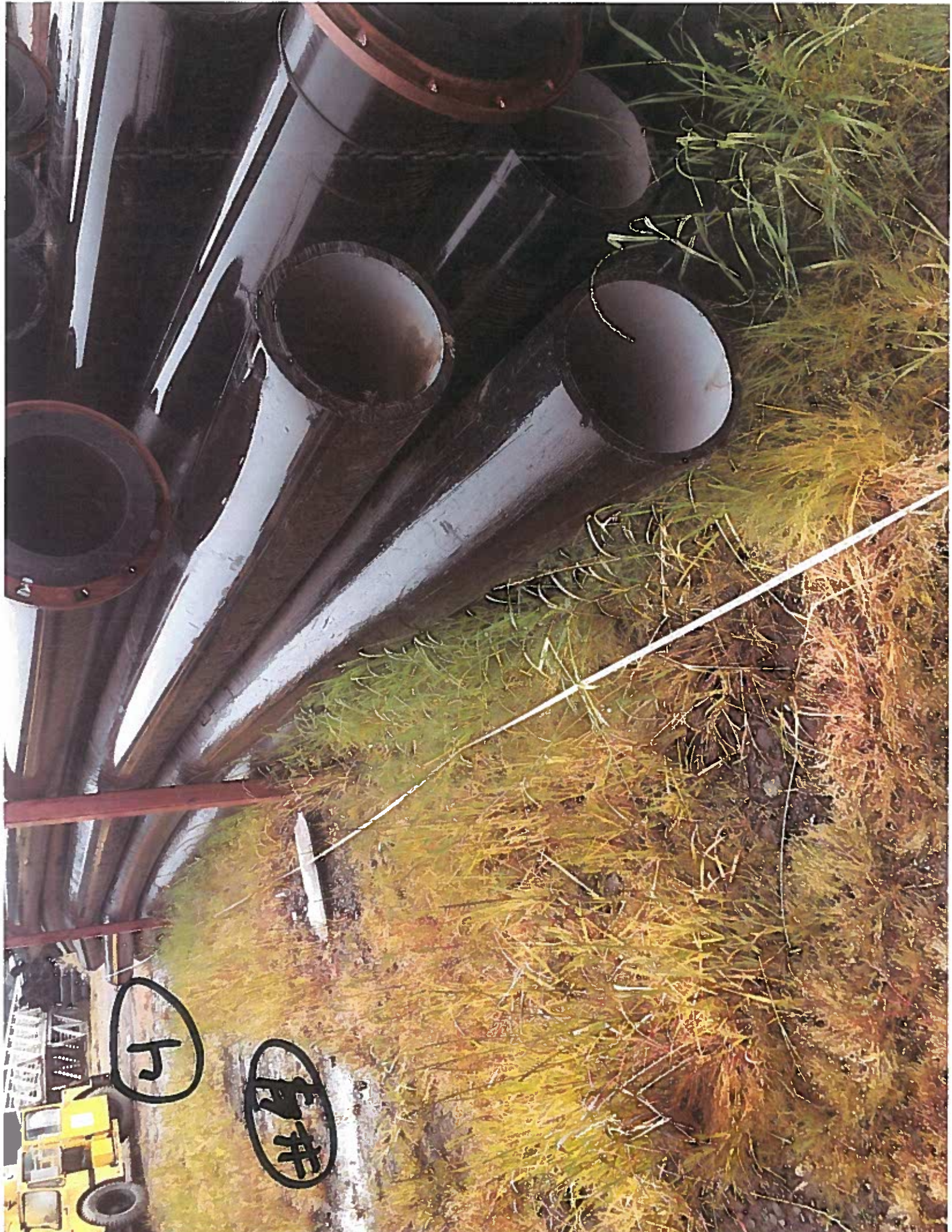
14" DREDGE PIPE  
50' LONG

Miss Katie  
Larkspur, Oregon

21631







井

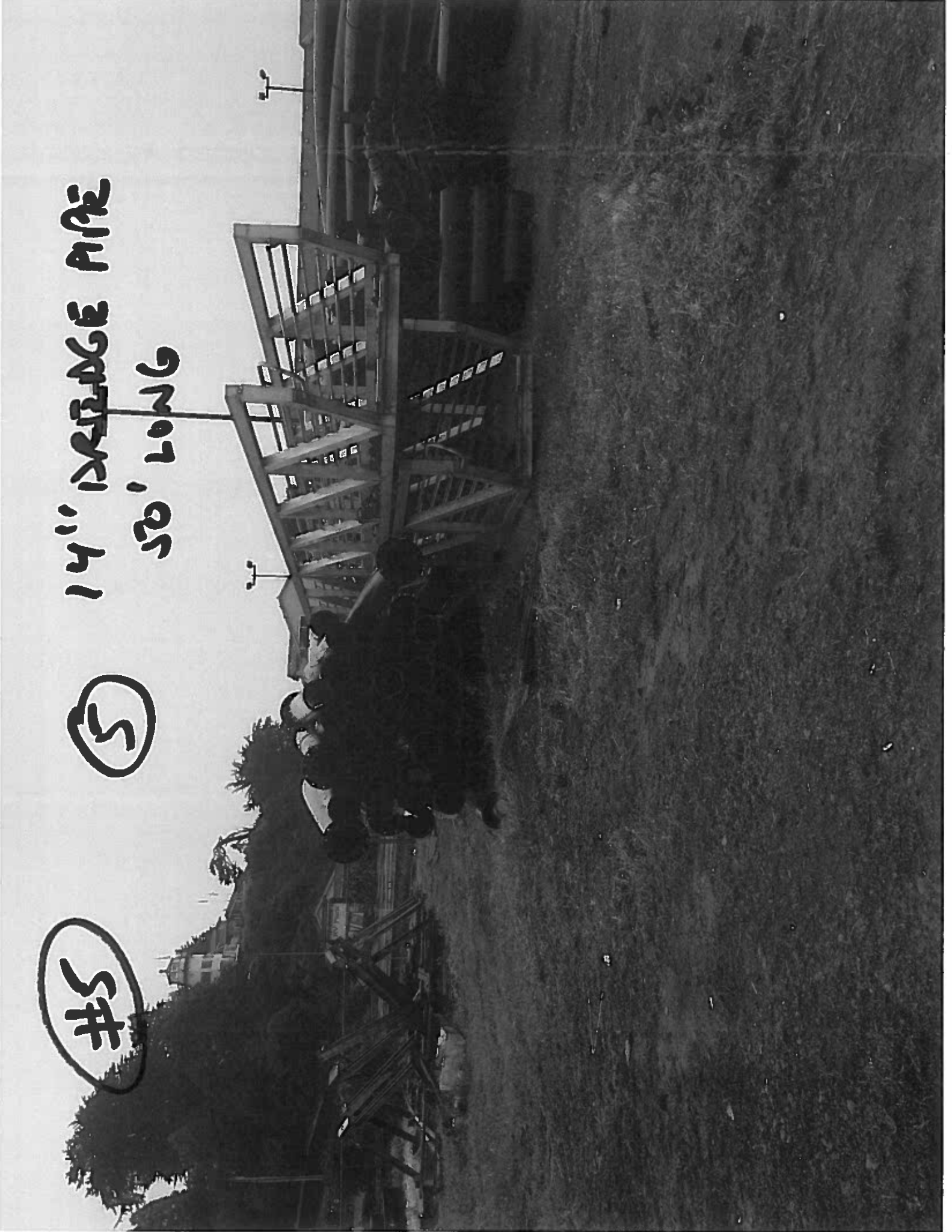
上



5#

5

14" DIAMETER PIPE  
50' LONG





5

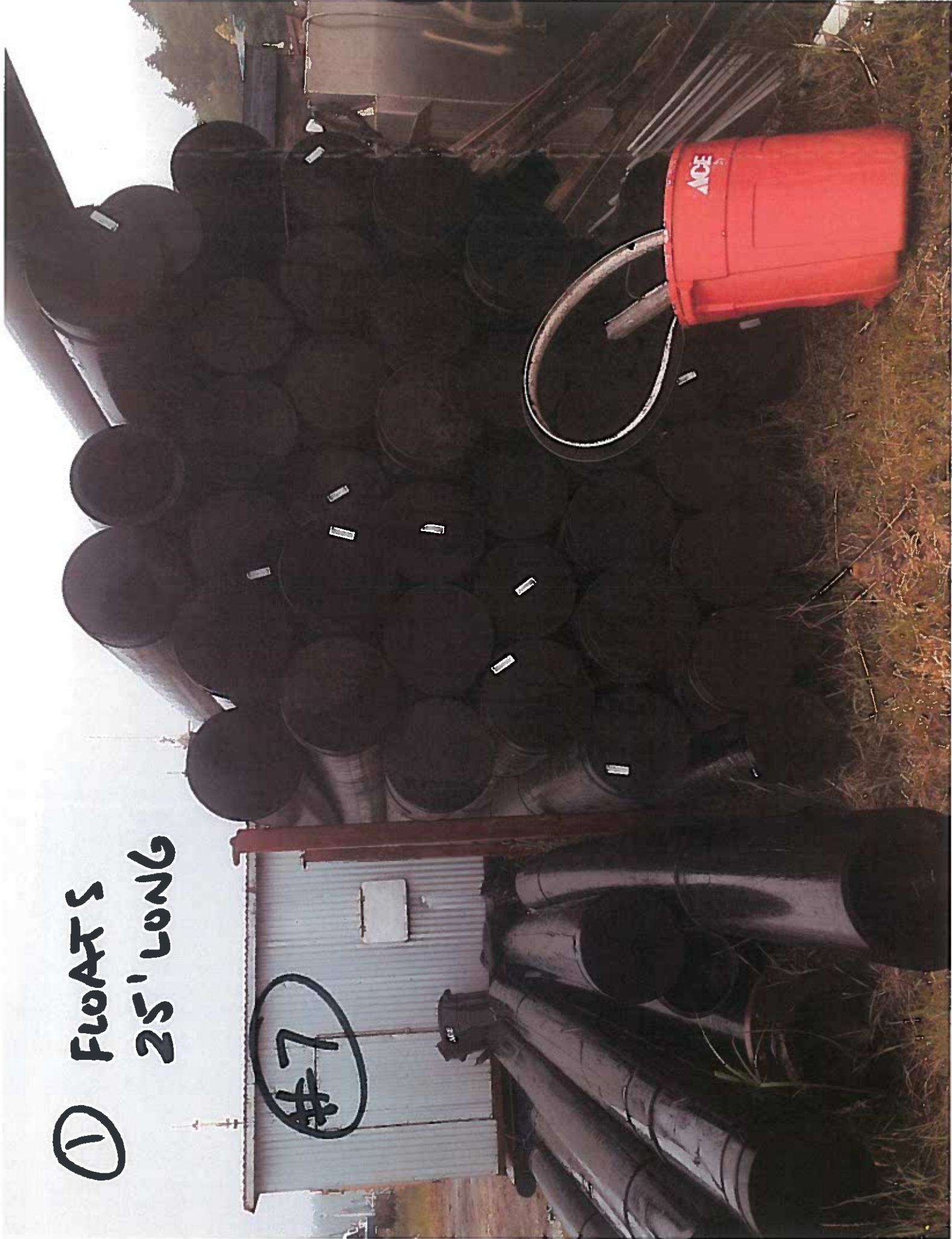
① 10" DREDGE PIPE  
50' LONG

STORED AT COOS BAY  
FOR STATE DREDGE  
OPERATIONS.

PIPE HAULED TO GOLD  
BEACH 9-12-16. HAS  
NOT RETURNED.

#6

① FLOATS  
25' LONG



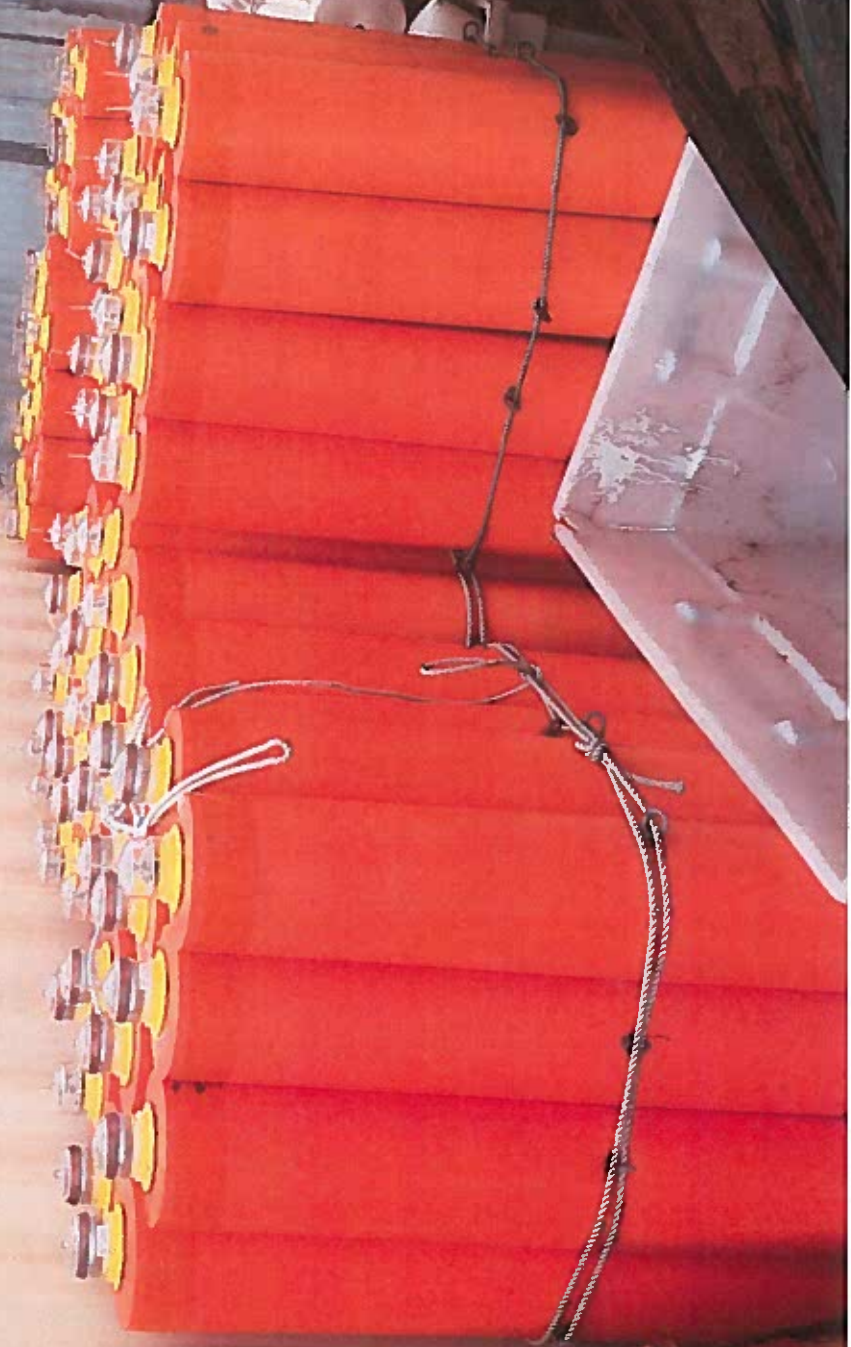


#8

LIGHT BUOYS & ANCHORS

20' LONG

CU 108 7  
126



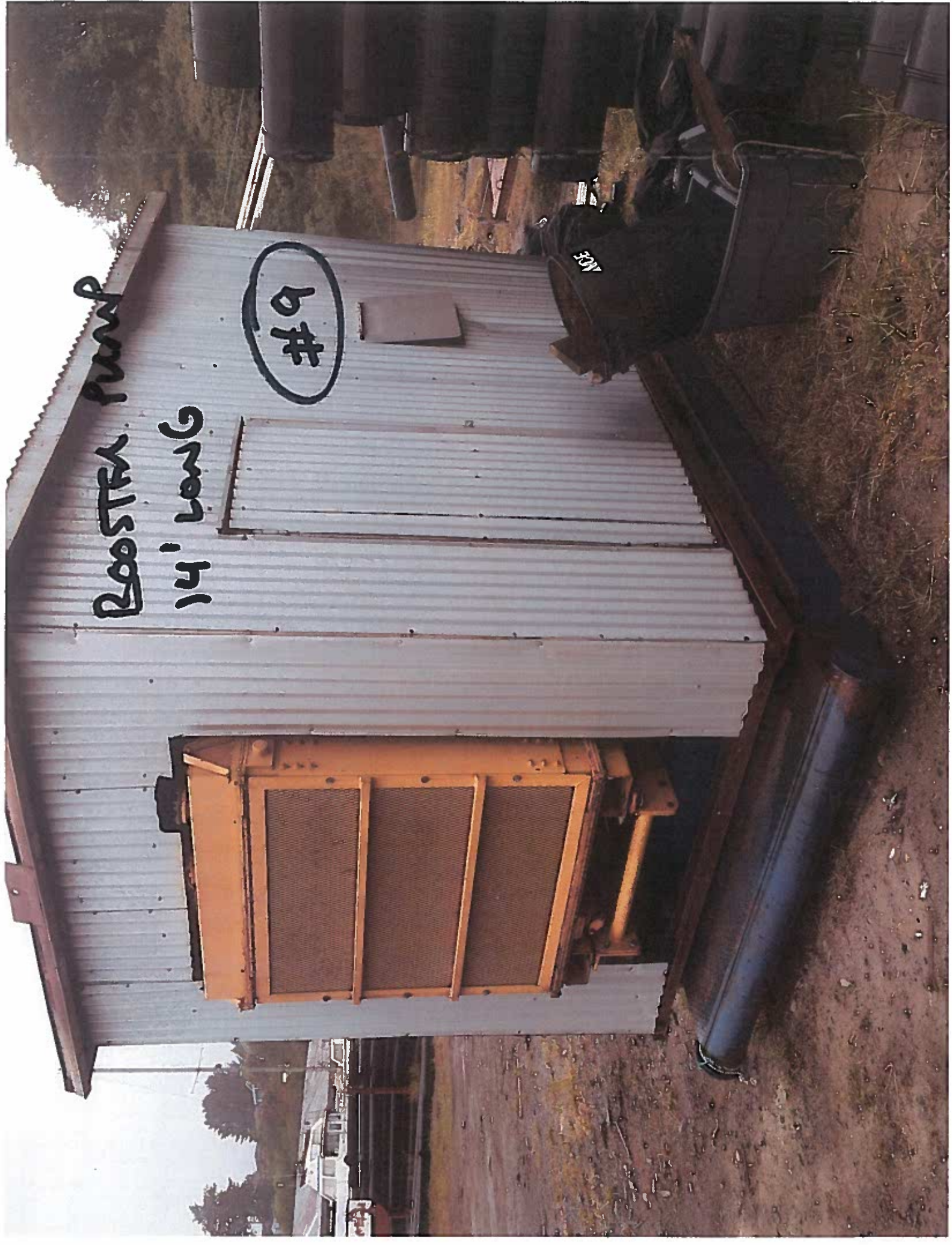


BOOSTER PUMP

14' LONG

#9

ACE





VESSEL'S ON TRANSIT DOCK

- LAST STRAW

- EXCALIBUR

- PACIFIC SURVEYOR

- KATALINA RIGAN

6-15-17

6-15-17



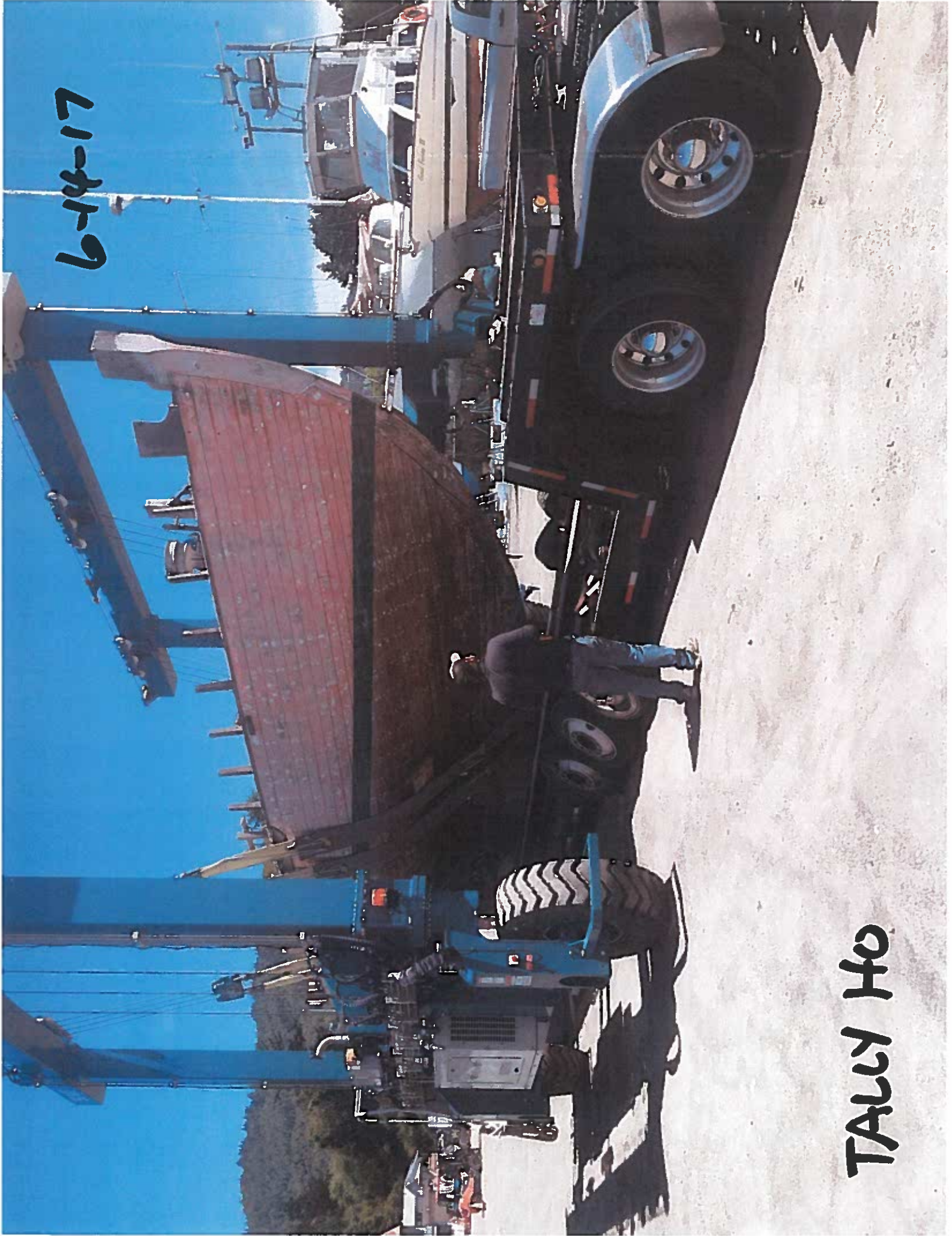
TRANSIENT DOCK

COMMERCIAL BASIN TRASH  
6-17-17



6-14-17

TALLY HO



CORPS DRENGE YAGUNWA

6-16-17



Date: 6-14-17

Day: WEDNESDAY

Time: 11:38AM

What Happen: VEHICLE RAN OVER ELECTRICAL PEDISTAL ON THE BOARDWALK.  
INDIVIDUAL GOT OUT OF THE VEHICLE AND PULLED THE PEDISTAL FROM UNDER THE  
CAR AND DROVE OFF. FEW MINUTES LATER, HE PICKED UP ANOTHER INDIVIDUAL THAT  
CAME FROM KATY'S CORNER MARKET AND THEN LEFT PORT PROPERTY.

Location: MAIN RETAIL BOARDWALK BETWEEN BELL + WHISTLE

Who was involved:

Name: UNKNOWN AT THIS TIME.

Address: \_\_\_\_\_

City: \_\_\_\_\_

Phone #: \_\_\_\_\_

Witness (if any):

Name: ACTIONS CAUGHT ON SECURITY CAMERAS.


Address: \_\_\_\_\_

City: \_\_\_\_\_

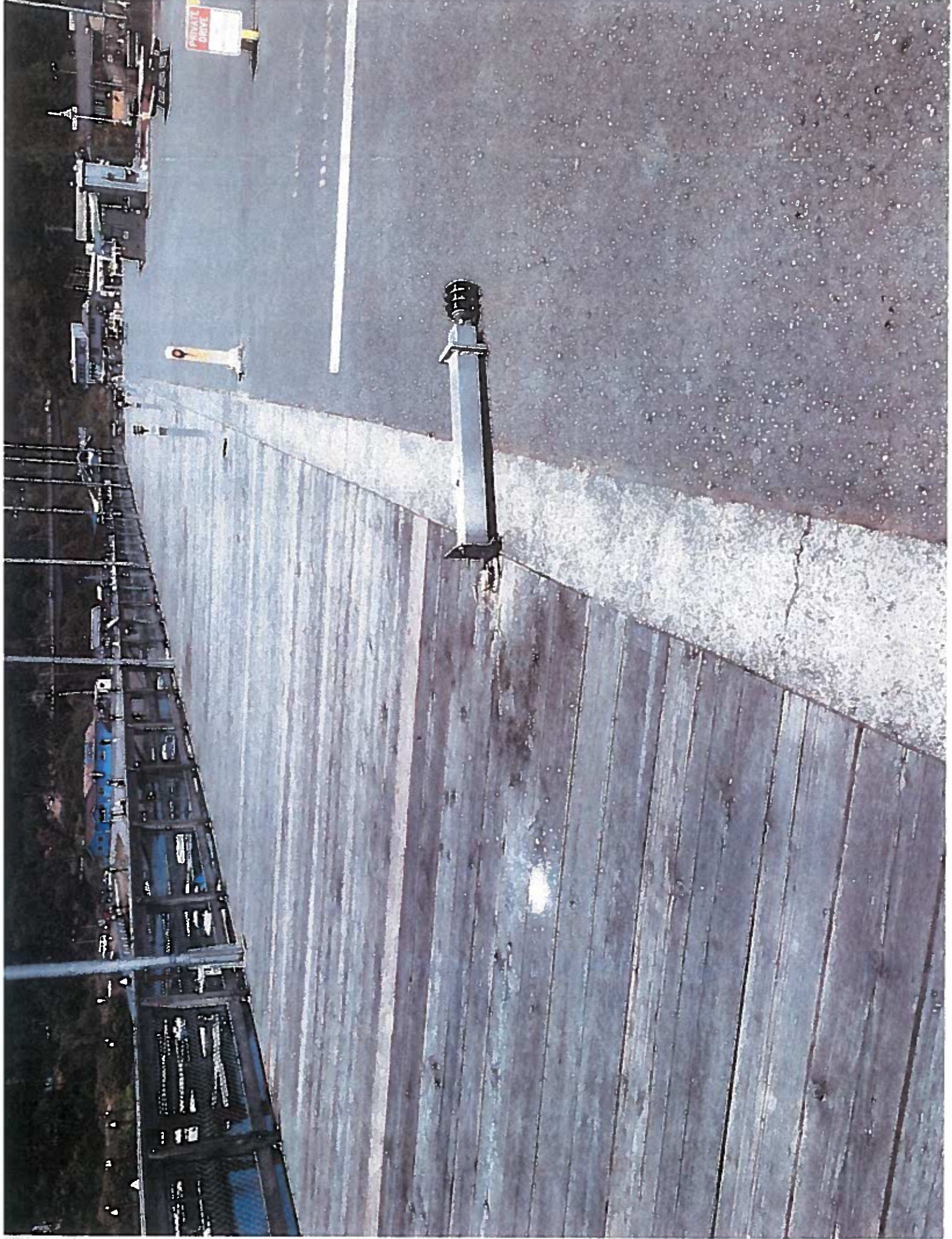
Phone #: \_\_\_\_\_

Corrective Action Taken: BARRICADED PEDISTAL AND TURNED OFF POWER.

COULMAN ELECTRIC UNHOOKED POWER FOR REPAIRS TO BE MADE TO PEDISTAL  
ESTIMATED REPAIRS \$500.00

Report Written By: GARY DEHLWIGEL 

Report Date: 6-14-17





SECURITY OFFICER KNAUSS JUNE 11, 2017

2007 CLOSED BOAT RAMP BATHROOM 2013

2150 CB CLOSED BATHROOM, RV PARK CLEAR  
MAIN CLEAR/CLOSED BOAT GATES 2214

2312 RV PARK CLEAR, PUBLIC FISHING CLEAR, KITE FIELD CLEAR 2320

0117 CB CLEAR, RV PARK CLEAR, KITE FIELD CLEAR 0137

0145 MAIN CLEAR, BOAT RAMP CONTACT WMA SITTING AT BATHROOM, INFORMED  
HIM PORT IS CLOSED, AND THAT HE'LL HAVE TO MOVE ON. 0158

0325 BOAT RAMP CLEAR/OPENED BATHROOM, MAIN CLEAR, CB CLEAR/OPENED  
BATHROOM, PUBLIC FISHING CLEAR, RV PARK CLEAR 0350

SECURITY OFFICER KNAUSS JUNE 12, 2017

2006 CLOSED BOAT RAMP BATHROOM 2011

2152 CLOSED CB BATHROOM, RV PARK, PUBLIC FISHING  
MAIN CLOSED BOAT GATES, BOAT RAMP 2219

2304 MAIN CLEAR, CB CLEAR, KITE FIELD CLEAR 2324

0012 RV PARK CLEAR, KITE FIELD CLEAR, CB CLEAR 0029

0125 MAIN, KITE FIELD, PUBLIC FISHING 0139

0303 MAIN, BOAT RAMP 0309

0330 OPENED BOAT RAMP BATHROOM, OPENED CB BATHROOM  
RV PARK, KITE FIELD 0345

SECURITY OFFICER KNAUSS JUNE 13, 2017

2114 CLOSED BOAT RAMP BATHROOM 2118

2157 RV PARK, CB CLOSED BATHROOM, MAIN/CLOSED BOAT GATES 2221

2310 RV PARK, PUBLIC FISHING CONTACT WFA LEFT A ITEM ON ONE OF THE TABLE EARLIER, CAME BACK LOOKING FOR IT, WAS UNABLE TO FIND IT. 2320

0022 CB, MAIN, BOAT RAMP 0038

0140 RV PARK, KITE FIELD, CB, MAIN, BOAT RAMP 0204

0330 OPENED BOAT RAMP BATHROOM, MAIN, OPENED CB BATHROOM 0350

**Gary**

---

**From:** Thomas Sorrentino <scks.patrol@gmail.com>  
**Sent:** Thursday, June 15, 2017 5:57 AM  
**To:** gary@portofbrookingsharbor.com  
**Subject:** SOUTH COAST KNIGHT SECURITY LOG FOR POBH JUNE 15, 2017  
14

2218 BOAT RAMP- RESTROOM CLOSED, GOV STOR CLEAR, MID JETTY CLEAR

MAIN AREA- SPORTS BASIN LOCKED

CB- RESTROOM CLOSED 2234

3343 RV PARK- CLEAR

PUB FISH- CLEAR

KITE FIELD- CLEAR 2256

0315 RV PARK- RESTROOMS CLEAR

PUB FISH- CLEAR

KITE FIELD- CLEAR

CB- CLEAR

MAIN AREA- RESTROOM CLEAR

BOAT RAMP- CLEAR 0340

0414 CB- RESTROOM OPEN 0416

0531 BOAT RAMP- RESTROOM OPEN 0537

--



## Gary

---

**From:** larence knauss <larence1@LIVE.COM>  
**Sent:** Saturday, June 17, 2017 4:07 AM  
**To:** scks.patrol@gmail.com; gary@portofbrookingsharbor.com  
**Subject:** South Coast Knight Security DAR for Jun 15, 2017

2150 BOAT RAMP- RESTROOM CLOSED, GOV STOR CLEAR, MID JETTY CLEAR MAIN AREA- SPORTS BASIN LOCKED  
CB- RESTROOM CLOSED 2204

2322 RV PARK- RESTROOMS CLEAR  
PUB FISH- CLEAR  
KITE FIELD- CLEAR  
CB- CLEAR  
MAIN AREA- CLEAR  
BOAT RAMP- CLEAR 2345

0202 RV PARK- CLEAR  
PUB FISH- CLEAR  
KITE FIELD- SDLP# 041 BAH WARNED FOR BEING IN PORT AFTER 10PM 0214

0314 CB- CONTACTED TWO WMA ON BIKES RIDING THROUGH THE PARKING LOT WITH TRASH BAGS FULL OF CANS.  
INFORMED THEM PORT IS CLOSED MAIN AREA- RESTROOM CLEAR BOAT RAMP- CLEAR 0330

0353 BOAT RAMP- RESTROOM OPEN  
CB- RESTROOM OPEN 0400

SECURITY OFFICER KNAUSS JUNE 16, 2017

2000 CLOSED BOAT RAMP BATHROOM 2005

2150 CLOSED CB BATHROOM, KITE FIELD  
RV PARK, MAIN/CLOSED BOAT GATES, BOAT RAMP 2210

2322 CB CONTACT WMA ORLP (ZBK 263) WAS LOOKING FOR THE RV PARK, RV PARK  
CLEAR, PUBLIC FISHING CLEAR, MAIN CLEAR, BOAT RAMP CLEAR 2354

0123 BOAT RAMP, MAIN, CB, KITE FIELD 0137

0329 OPENED BOAT RAMP BATHROOM, MAIN CLEAR  
OPENED CB BATHROOM, RV PARK CLEAR 0349

SECURITY OFFICE KNAUSS JUNE 17, 2017

2150 CLOSED BOAT RAMP BATHROOM, CLOSED CB BATHROOM  
RV PARK WHILE GATE WAS GETTING CLOSED FIREWORKS WERE LITE OFF, AT 2204 NO  
MORE WERE LIT OFF WHILE ON PROPERTY.  
KITE FIELD 2225

2318 RV PARK CLEAR, PUBLIC FISHING CLEAR 2329

2335 MAIN CLEAR, BOAT RAMP CLEAR 2343

0130 MAIN CONTACT WMA WALKING THROUGH PARKING LOT INFORMED HIM PORT  
CLOSED, CB CLEAR, RV PARK CLEAR, KITE FIELD CLEAR 0157

0341 OPENED BOAT RAMP BATHROOM, OPENED CB BATHROOM, RV PARK, PUBLIC  
FISHING CLEAR, KITE FIELD CLEAR 0354

NEW DOCK HOIST

6-14-17

