

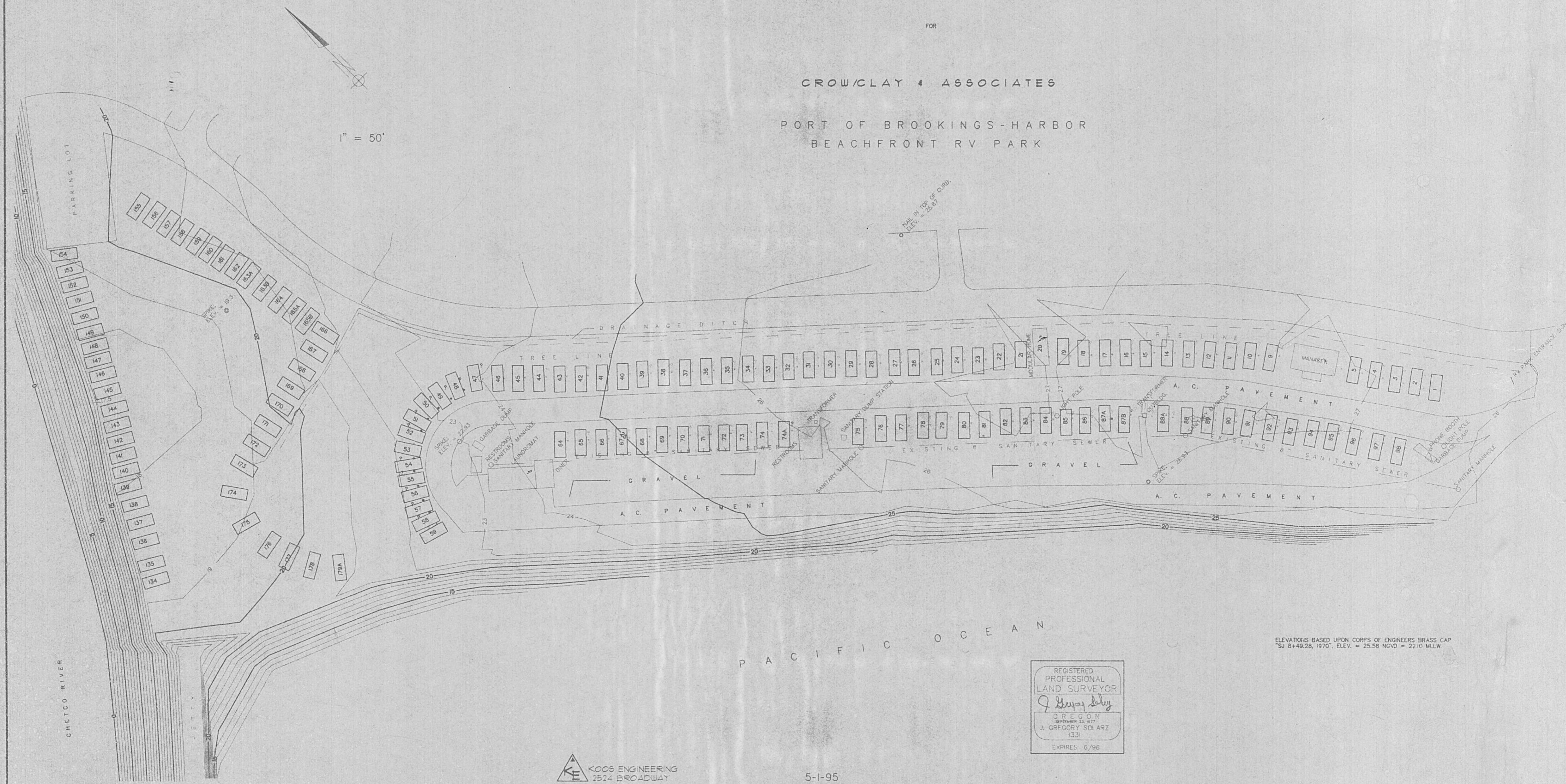
# TOPOGRAPHIC SURVEY

FOR

CROW/CLAY & ASSOCIATES

PORT OF BROOKINGS-HARBOR  
BEACHFRONT RV PARK

1" = 50'



P A C I F I C O C E A N

ELEVATIONS BASED UPON CORPS OF ENGINEERS BRASS CAP  
"SJ 8+49.26, 1970", ELEV. = 25.56 NGVD = 22.10 MLLW.

REGISTERED  
PROFESSIONAL  
LAND SURVEYOR  
*J. Gregory Solarz*  
OREGON  
EXPIRES: 6/96

KE KOOS ENGINEERING  
2524 BROADWAY  
NORTH BEND, OREGON

5-1-95

MAY 1995