

6.1 Capital Facilities Plan

The Port has identified short-, mid-, and long-term capital improvement projects to facilitate the continued success of its operations and facilities. Table 14 lists potential projects, their timeframes, and planning level cost estimates for them.

Table 14 – Capital Improvement Plan

		Capital Improvements	2014 Cost Estimate ¹	Timeline	Priority	Priority Project Category
1	Fish Market and Cleaning Station	Upgrade existing buildings to accommodate fish market and cleaning station.	\$200,000	Yrs 1-5	High	Facility Upgrades
2	Marina Parking Upgrades	Reconfigure boat launch circulation, grind and overlay parking lot, add curbing and striping, add concrete sidewalks, install stormwater improvements.	\$750,000	In Progress	High	Recreation Improvements /Public Amenities
3	Lease Upgrades	Make commercial building upgrades.	tbd (Port to est. SF of new and renovation)	Yrs 1-10	Medium	Facility Upgrades
4	Recreational Marina Improvements	Repair existing floats and make improvements to accommodate larger vessels.	tbd	Yrs 1-5	High	Recreation Improvements/Public Amenities
5	Boardwalk Expansion	Expand existing boardwalk; improve pedestrian amenities and provide public viewing areas.	tbd	Yrs 6-10	Medium	Recreation Improvements/Public Amenities
6	Receiving Dock Upgrades and Fish Processing Facility	Demolish two existing timber docks and concrete bulkhead; construct full-length concrete dock; construct 8,000-SF fish processing facility; install concrete pavement; install storm drainage facilities.	\$17,000,000	Yrs 1-5	High	Commercial/ Marine Improvements
7	Commercial Center Upgrade/Renovation	Commercial building and site repairs.	\$1,500,000	Yrs 1-5	Medium	Facility Upgrades
8	Boatyard Relocation and Upgrade	Acquire new 100-ton straddle hoist (\$600,000), reconstruct sheet pile bulkhead along north and west edge of barge slip, construct new haul-out pier for straddle hoist, re-grade and pave work areas and access roads, construct paved transfer road, install fencing, install storm drainage facilities. Dredge for barge slip is not included. See Figure 5.	\$14,000,000	Yrs 1-5 Yrs 5-10	High to Medium	Commercial/ Marine Improvements
9	Commercial Marina Expansion	Expand commercial marina and add larger vessel slips.	tbd	Yrs 10-20	Medium	Commercial/ Marine Improvements

DONE

DONE

DONE

GREEN BUILDING

215

		Capital Improvements	2014 Cost Estimate ¹	Timeline	Priority	Priority Project Category
10	Long-term Development Potential	Assess condo/ mixed-use development potential with drainage improvements including the addition of a canal/bioswale.	tbd	Yrs 10-20	Low	Public-Private Partnership Opportunity
11	Development Potential	Examine opportunity site for potential development - hotel/condo.	tbd	Yrs 10-20	Low	Public-Private Partnership Opportunity
12	Ongoing Dredging	Coordinate with southern Oregon ports to meet ongoing dredging needs.	\$7.20 per cubic yard of dredge material (shared cost between ports and state)	Ongoing	High	Maintenance
Total			\$33 million²			

¹ Cost estimates are based on similar projects in other locations and are not based on detailed engineering plans or analysis. Final engineering and construction costs may vary.

²Total cost does not include \$7.20 per cubic yard of dredge material – dredge cost to be shared between Port and State.

6.1.1 Project Opportunities

Table 15 is an overview of the Port's capital improvement and opportunity projects, and includes brief project descriptions, existing zoning designation, and potential conflicts with land use and development regulations. Project locations are shown on the concept plan (Figure 4).

Table 15 – Project Opportunities

Project and Description	Existing Zoning Designation	Potential Conflicts with Land Use and/or Development Regulations
Fish Market and Cleaning Station – upgrade and renovate existing buildings to accommodate fish market and cleaning station. ¹	C-1	Permitted use; no conflicts anticipated.
Marina Parking Upgrades – parking lot and stormwater improvements; project engineering is complete and construction will begin soon; project is funded through Oregon Marine Board grant.	C-1	Permitted use; no conflicts anticipated.
Lease Upgrades – upgrade and renovate existing commercial facilities; improvements will be tenant driven.	C-1	Retail and service establishments are permitted uses; no conflicts anticipated.
Recreational Marina Improvements – repair existing floats and make marina improvements to accommodate larger vessels. ¹	C-1	Marina facilities not addressed as permitted or conditional uses in C-1 zone. Conversations needed with County staff (see note below); state and federal permits needed for in-water work.

4. The STAPLEE process to ensure that mitigation action items under consideration for implementation meet the needs and objectives of the District, its communities, and citizens, by considering the social, technical, administrative, political, economic and environmental aspects of potential projects.
5. The District does not have the resources (capability) to implement the action within the duration of this NHMP.

**Table 1
POBH 's Mitigation Action Items**

Rank	ACTIONS	Timeline	Source of Funds	Lead Agency	Support Agency	Life	Damage
						Safety	Reduction
1	Evaluate and prioritize mitigation measures for the above hazards (see PP 11 – 17), as funding becomes available.	Ongoing	POBH	POBH (Port Mgr., Harbor-Master)	POBH Engineer-of-Record	X	X
1	Ensure that new infrastructure components are adequately designed to minimize risk from natural hazards.	Ongoing	POBH	POBH (Port Mgr., Harbor-Master)	POBH Engineer-of-Record	X	X
1	Evaluate the seismic vulnerabilities of embankments and overstructures, and prioritize replacements with seismically designed stabilizing methods.	Ongoing	POBH	POBH (Port Mgr., Harbor-Master) POBH	POBH Engineer-of-Record	X	X
1	Ensure that new infrastructure components are adequately designed to minimize risk from natural hazards.	Ongoing	POBH	POBH (Port Mgr., Harbor-Master)	POBH Engineer-of-Record	X	X
1	Inventory system infrastructure locations subject to flood damages, including scour/erosion.	Ongoing	POBH	POBH (Port Mgr., Harbor-Master)	POBH Engineer-of-Record	X	X
3	Sport Basin, 92 (Phase I)* plus 90 additional (Phase II)** pole	2018/2019 2019/2020	*FEMA, PA/*406	POBH (Port Mgr.,	IFA/BO POBH Engineer-of-	X	X

	pile replacements-Described on pages 11 & 12.		**HMGP, CDBG	Harbor-Master)	Record FEMA/OEM		
7	Boardwalk, N. Deck-Described on page 12.	2018	PDM, AOA, CDBG, OEM, POBH	POBH (Port Mgr., Harbor-Master)	IFA/BO Engineer-of Record FEMA/OEM	X	X
2	Sport Basin Boat Launch-Described on page 12.	2018	OSMB, POBH, AOA	POBH (Port Mgr., Harbor-Master)	OSMB	X	X
8	Commercial Basin-repair of 6 walkways and floating dock slips--Described on page 12 & 13.	2018/2019	PDM, POBH, CDBG, AOA	POBH (Port Mgr., Harbor-Master)	IFA/BO Engineer-of Record FEMA/OEM	X	X
4	Upland Storage Area-Aboveground fuel storage, fuel, water, wastewater, electrical service line support structure-Described on pages 13 & 14.	2018	PDM, POBH CDBG, AOA	POBH (Port Mgr., Harbor-Master)	IFA/BO Engineer-of Record FEMA/OEM	X	X
10	Ice House/Cold Storage & Docks Areas-Stormwater drainage-Described on page 14.	2020	POBH, CDBG, PDM, AOA, OEM	POBH (Port Mgr., Harbor-Master)	IFA/BO Engineer-of Record FEMA/OEM	X	X
6	Embankment Repair, via H-pile/concrete section stabilization-Described on pages 14 & 15.	2018 - 2021	POBH, CDBG, AOA	POBH (Port Mgr., Harbor-Master)	IFA/BO Engineer-of Record FEMA/OEM	X	X
5	Commercial Receiving Docks-Described on page 16.	2018 - 2022	CDBG, POBH, OEM, PDM, AOA	POBH (Port Mgr., Harbor-Master)	IFA/BO Engineer-of Record FEMA/OEM	X	X
11	RV Park Protection-Described on pages 16 & 17.	2020/2021	HMGP, AOA CDBG, USDA, POBH	POBH (Port Mgr., Harbor-Master)	IFA/BO Engineer-of Record FEMA/OEM	X	X
9	Transient Dock Repair--Described on page 12.	2019	PDM, HMGP, POBH, AOA	POBH (Port Mgr., Harbor-Master)	IFA/BO Engineer-of Record FEMA/OEM	X	X

AOA-Any Other Funding Source Available BO-Business Oregon CDBG-Community Development Block Grant
FMA-Flood Mitigation Assistance OSMB-Oregon State Marine Board IFA-Infrastructure Finance Authority
POBH-Port of Brookings Harbor PDM- Pre-Disaster Mitigation Grant Program

**PORT OF BROOKINGS HARBOR - DAMAGE INFRASTRUCTURE AND REPAIR LIST
LAST UPDATE JULY 18, 2017 COMPLETE LIST**

NHMP Rank	Timeline	Priority	Board Recommendation	Description of Condition	Option 1	Estimated Cost	Option 2	Estimated Cost	Option 3	Estimated Cost	Funds Available Y/N
3	2018 / 2019	1	Install trip hazard signs, Option 3 if possible with permitting agencies 12-08-2016	Sport Basin E Dock falling apart Basin 1	Replace pilee and docks existing, ask for emergency status and perform work this year.	474,298	Replace pilee and docks as existing and perform work next season.	606,870	Replace piles and reconfigure docks as proposed, ask for emergency status and perform work this year	670,000	Y
3	2018 / 2019	1	Install trip hazard signs at ramps 12-08-2016	Sport Basin piling coming loose Basin 1	FEMA, HMGP and IFA Funding. Permits in place and contractor selected.						

Priority

1 = immediate need

5 = less immediate need



LAST UPDATE JULY 18, 2017 COMPLETE LIST

NHMP Rank	Timeline	Priority	Board Recommendation	Description of Condition	Option 1	Estimated Cost	Option 2	Estimated Cost	Option 3	Estimated Cost	Funds Available Y/N
		1	Install trip hazard signs. Option 2 12-08-2016	Sport Basin docks hitting ground damaging docks and causing tripping points caused by storm drain	Dredge material	100,000					N
FEMA and HMSP Funding and permits are being acquired, contract for work needs to be solicited.											
Temporary tripping hazard signs were installed.											
E Dock was removed.											
Section of C Dock is closed and barricaded											
Section of D Dock is closed and barricaded											
Main dock barricaded and closed between F & D.											
Main dock separated between D & F 2017											

Priority
 1 = immediate need
 5 = less immediate need



NHMP Rank	Timeline	Priority	Board Recommendation	Description of Condition	Option 1	Estimated Cost	Option 2	Estimated Cost	Option 3	Estimated Cost	Funds Available Y/N
4	2018	1	Install trip hazard signs, look for other alternative reroute of fuel lines 12-08-2016	Fuel dock slope falling causing the concrete ramp to separate. Fuel lines are attached to the ramp.	Remove and rebuild slope with proper rock slope protection	600,000	Combination of shoring and rock slope protection	1,500,000	Combination of shoring and rock slope protection of entire island	1,900,000	Budgeted - N
<p>Temporary tripping hazard signs were installed and ramp to fuel dock is closed.</p> <p>Breakaway valves were added to lines to prevent a large spill. Other piping routes are not possible at this time.</p> <p>Ramp continues to move and gap has widen.</p> <p>FEMA has declined 2016 emergency.</p> <p>Checking on HMGP funding</p> <p>Gap measured 10-23-17 was 7 to 8 inches, gap measure 11-19-18 is 9.5 to 10"</p> <p>Fuel lines are compromised behind the breakaway valves. Working on a solution to shutdown the fuel lines and still provide fuel for customers.</p>											

Priority

- 1 = immediate need
- 5 = less immediate need



NHMP Rank	Timeline	Priority	Board Recommendation	Description of Condition	Option 1	Estimated Cost	Option 2	Estimated Cost	Option 3	Estimated Cost	Funds Available Y/N
		5	Complete work when available 12-08-2016	N-O Ramp drainage and slope repair	Replace drain line and recompact slope	12,000					Y
				Slope next to Hallmark Dock drainage and slope repair	Replace drain line and recompact slope	12,000					Y

Priority

1 = immediate need

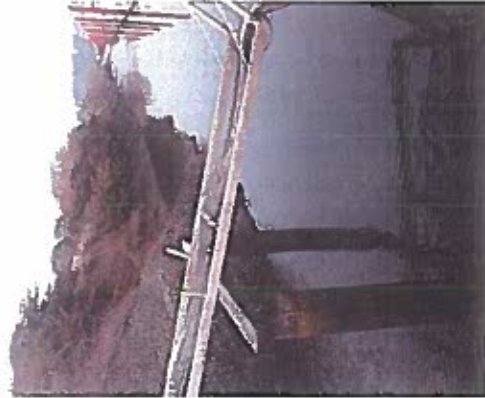
5 = less immediate need



**PORT OF BROOKINGS HARBOR - DAMAGE INFRASTRUCTURE AND REPAIR LIST
LAST UPDATE JULY 18, 2017 COMPLETE LIST**

N-HMP Rank	Timeline	Priority	Board Recommendation	Description of Condition	Option 1	Estimated Cost	Option 2	Estimated Cost	Option 3	Estimated Cost	Funds Available Y/N
6	2018 / 2021	1	Install trip hazard signs 12-08-2016	Commercial Basin slopes failing will cause damage to adjacent parking and infrastructure	Remove and rebuild 1,000 ft slope with proper rock slope protection	1,500,000	Install sheet pile, backfill and install handrail	2,000,000	Rebuild all of Basin 2 slopes	3,500,000	N
Installed fence where fall hazards exists in reopened walkway. Waiting for FEMA assistance, FEMA has declined first request, governor planning to appeal the decision. (it appears) failing slopes impacting the Kita Field restroom Slopes continue to fail and impact docks and restroom											

Priority
1 = immediate need
5 = less immediate need



LAST UPDATE JULY 18, 2017 COMPLETE LIST

NHMP Rank	Timeline	Priority	Board Recommendation	Description of Condition	Option 1	Estimated Cost	Option 2	Estimated Cost	Option 3	Estimated Cost	Funds Available Y/N
		1	Install trip hazard signs at ramps 12-08-2016	Commercial Basin slopes failing causing dock damage and tripping and walking hazard	Dredge material	300,000					N
Temporary tripping hazard signs were installed. FEMA has declined 2016 emergency. Checking on HMGP funding Basin 2 - C Dock closed											

Priority
 1 = immediate need
 5 = less immediate need

LAST UPDATE JULY 18, 2017 COMPLETE LIST

NHMP Rank	Timeline	Priority	Board Recommendation	Description of Condition	Option 1	Estimated Cost	Option 2	Estimated Cost	Option 3	Estimated Cost	Funds Available Y/N
		1	Install barricades and warning signs, Option 1 when funds available 12-08-2016	Fishing Pier subgrade failing causing sinkholes	Secure void and fill with slurry backfill	20,000	Install drainage pipe in sinkhole and backfill with 2 sack slurry mix	25,000	Remove asphalt and subgrade, repair subgrade and repaved parking lot to drain properly	150,000	N
Area barricaded and temporary signs installed.											
Additional holes have developed, subgrade continues to fail, areas have been barricaded											
Corps may not allow slurry backfill to the jetty.											

Priority

1 = immediate need

5 = less immediate need



LAST UPDATE JULY 18, 2017 COMPLETE LIST

NI-MP Rank	Timeline	Priority	Board Recommendation	Description of Condition	Option 1	Estimated Cost	Option 2	Estimated Cost	Option 3	Estimated Cost	Funds Available Y/N
5	2016 / 2022	2	Repair docks when funds are available 12-08-2016	Commercial receiving docks broken (Hallmark)	151 feet of dock replaced	2,265,000					N
Waiting for assistance from State, SB 646 is still under the Ways & Means Committee. SB 5530 allows \$600,000 for dock repairs from Lottery Bond, available in 2019.											

Priority

1 = immediate need

5 = less immediate need



LAST UPDATE JULY 18, 2017 COMPLETE LIST

NHMP Rank	Timeline	Priority	Board Recommendation	Description of Condition	Option 1	Estimated Cost	Option 2	Estimated Cost	Option 3	Estimated Cost	Funds Available Y/N
5	2018 / 2022	1	Install barricades and warning signs at damaged area, repair docks when funds available 12-08-2016	Commercial receiving docks broken (Bandon Pacific)	100 feet of dock replaced	1,500,000					N
<p>Fence installed to prevent usage of the dock.</p> <p>Waiting for assistance from State, SB 646 is still under the Ways & Means Committee.</p> <p>Bandon Pacific relocated to the public hoist until receiving dock is repaired. Port lost the use of the public hoist.</p> <p>SB 5530 allows \$600,000 for dock repairs from Lottery Bond, available in 2019.</p>											

Priority

1 = immediate need

5 = less immediate need



LAST UPDATE JULY 18, 2017 COMPLETE LIST

NHMP Rank	Timeline	Priority	Board Recommendation	Description of Condition	Option 1	Estimated Cost	Option 2	Estimated Cost	Option 3	Estimated Cost	Funds Available Y/N
5	2016 / 2022	2	Repair docks when funds are available 12-08-2016	Commercial receiving and Ice House docks broken (BC Fisheries)	100 feet of dock replaced	1,500,000					N
Waiting for assistance from State, SB 646 is still under the Ways & Means Committee. SB 5530 allows \$600,000 for dock repairs from Lottery Bond, available in 2019.											

Priority

1 = immediate need

5 = less immediate need

LAST UPDATE JULY 18, 2017 COMPLETE LIST

NHMP Rank	Timeline	Priority	Board Recommendation	Description of Condition	Option 1	Estimated Cost	Option 2	Estimated Cost	Option 3	Estimated Cost	Funds Available Y/N
		5	Dump out is covered and secured, check Option 3 before closing 12-08-2016	Sewer I&I and Sand issues (RV Park)	-Build higher curb and install a sewer over the dump out pump	4,000	-Relocate dump out to new location behind laundromat	15,000	Check with State Parks and see if Dump Out is required		N
Dump out is closed and covered to prevent any use or I&I to occur.											
Oregon State Parks was contacted and dump out is not required.											
If we make two more pull thru stalls, we have to notify Harbor Sanitary for possible additional sewer fees.											
Dump out removed 2018											
Main restroom shutdown October 2018 and sewer lines capped.											

Priority

- 1 = immediate need
- 5 = less immediate need



LAST UPDATE JULY 18, 2017 COMPLETE LIST

NHMP Rank	Timeline	Priority	Board Recommendation	Description of Condition	Option 1	Estimated Cost	Option 2	Estimated Cost	Option 3	Estimated Cost	Funds Available Y/N
7	2018	5	Install warning sign and add note to Event Form no lites on boardwalk 12-08-2016	North end of Boardwalk slope is failing and replace worn out deck boards	Replace damaged shoring, repair boardwalk and replace worn out boards	650,000	Replace all old shoring and build new boardwalk to match newer south end boardwalk	4,500,000	Stabilize failing slope per engineers direction		N
		1	Board selected Option 3 when funds are available and upgraded priority 07-18-2017		Temporary tripping hazard signs were installed.						
					Gap measured on 10-23-17 was 2-1/4". Gap measured on 11-19-18 is 2-5/8".						
					15-foot section of the boardwalk is closed to public use.						

Priority
1 = immediate need
5 = less immediate need



LAST UPDATE JULY 18, 2017 COMPLETE LIST

NHMP Rank	Timeline	Priority	Board Recommendation	Description of Condition	Option 1	Estimated Cost	Option 2	Estimated Cost	Option 3	Estimated Cost	Funds Available Y/N
		3	Repair potholes as necessary 12-08-2016	Roads within the Port failing causing potholes	Repair potholes, cracks and seal coat	150,000	Grind asphalt and repave areas	4,000,000	Sealcoat and pave all gear storage areas	2,500,000	N
Potholes patched as they occur											

Priority
 1 = immediate need
 5 = less immediate need

LAST UPDATE JULY 18, 2017 COMPLETE LIST

NI-MP Rank	Timeline	Priority	Board Recommendation	Description of Condition	Option 1	Estimated Cost	Option 2	Estimated Cost	Option 3	Estimated Cost	Funds Available Y/N
		3	Seek other options to replace existing building 12-08-2016	Port tenant building (Zola's) rotting	Build third retail building per Strategic Plan	500,000	Remodel existing building	50,000			N
		5	Board approved to update priority 07-18-2017		Out building was demolished May 2017 to make room for an refrigerated container unit.						

Priority

1 = immediate need

5 = less immediate need

LAST UPDATE JULY 18, 2017 COMPLETE LIST

NHMP Rank	Timeline	Priority	Board Recommendation	Description of Condition	Option 1	Estimated Cost	Option 2	Estimated Cost	Option 3	Estimated Cost	Funds Available Y/N
		2	Option 2 when funds become available 12-08-2018	Port building (laundromat) rotting	-Demo and rebuild in same location.	300,000	Demo and replace building with manufactured building and reconnect services	150,000	-Demo building, rebuild at a new location and install pull thru site.	500,000	N
			Board approved to split priorities 07-18-2017		Coos Curry Electric shutdown the power due to unsafe electrical box and conduit.						
		1	Board approved to demo building ASAP 07-18-2017		Building demoed 2017						
		3	Board approved to replace facility at priority 3 when funds are available 07-18-2017								

Priority
 1 = immediate need
 5 = less immediate need

**PORT OF BROOKINGS HARBOR - DAMAGE INFRASTRUCTURE AND REPAIR LIST
LAST UPDATE JULY 18, 2017 COMPLETE LIST**

NHMP Rank	Timeline	Priority	Board Recommendation	Description of Condition	Option 1	Estimated Cost	Option 2	Estimated Cost	Option 3	Estimated Cost	Funds Available Y/N
8	2018 / 2019	2	Install tripping hazard signs at ramps, complete repairs as necessary 12-08-2016	Commercial Dock repairs in Basin 2	Repair broken docks	200,000	Replace with new docks	450,000			N
Temporary tripping hazard signs were installed. SB 5530 allows \$600,000 for dock repairs from Lottery Bond, available in 2019.											

Priority
 1 = immediate need
 5 = less immediate need

LAST UPDATE JULY 18, 2017 COMPLETE LIST

NHMP Rank	Timeline	Priority	Board Recommendation	Description of Condition	Option 1	Estimated Cost	Option 2	Estimated Cost	Option 3	Estimated Cost	Funds Available Y/N
B	2018 / 2019	2	Install tripping hazard signs at ramps, complete repairs as necessary 12-08-2016	Commercial Sport Dock repairs Basin 2	Repair broken docks	200,000					N
Temporary tripping hazard signs were installed. SB 5530 allows \$800,000 for dock repairs from Lottery Bond, available in 2019.											

Priority
 1 = immediate need
 5 = less immediate need

LAST UPDATE JULY 18, 2017 COMPLETE LIST

NHMP Rank	Timeline	Priority	Board Recommendation	Description of Condition	Option 1	Estimated Cost	Option 2	Estimated Cost	Option 3	Estimated Cost	Funds Available Y/N
		2	Install tripping hazard signs at ramps, complete repairs as necessary 12-08-2016	Sport Dock repairs in Basin 1	Repair broken docks	200,000					N
Temporary tripping hazard signs were installed. SB 5530 allows \$600,000 for dock repairs from Lottery Bond, available in 2019.											

Priority

- 1 = immediate need
- 5 = less immediate need

**PORT OF BROOKINGS HARBOR - DAMAGE INFRASTRUCTURE AND REPAIR LIST
LAST UPDATE JULY 18, 2017 COMPLETE LIST**

NHMP Rank	Timeline	Priority	Board Recommendation	Description of Condition	Option 1	Estimated Cost	Option 2	Estimated Cost	Option 3	Estimated Cost	Funds Available Y/N
		1	Board approved as noted 07-18-2017	Repair Kite Field Restrooms and Upgrade	Repair/replace plumbing, walls and roof. Install doors to secure at night.	30,000	Purchase Drop-In-Place Unit to replace entire facility				N
Restroom is closed until repairs can be made, temporary portable toilets are in place.											
Upgrading toilets, faucets, lights and installing doors to reopen facility prior to July 14, 2017											
Restroom reopened 07-13-17											
Floor needs replaced, flooring resurfaced and painting											
Slopes need to be repaired first											

Priority
1 = immediate need
5 = less immediate need

LAST UPDATE JULY 18, 2017 COMPLETE LIST

N-HMP Rank	Timeline	Priority	Board Recommendation	Description of Condition	Option 1	Estimated Cost	Option 2	Estimated Cost	Option 3	Estimated Cost	Funds Available Y/N
		1	Board approved as noted 07-18-2017	Repair / Replace Retail Center Building #1 and #2 roofs	Repair / Replace Retail Center Building # 1 and # 2 roofs	125,000					N

Priority
 1 = immediate need
 5 = less immediate need

LAST UPDATE JULY 18, 2017 COMPLETE LIST

NHMP Rank	Timeline	Priority	Board Recommendation	Description of Condition	Option 1	Estimated Cost	Option 2	Estimated Cost	Option 3	Estimated Cost	Funds Available Y/N
		1	Board approved as noted 07-18-2017	Repaint Retail Center Buildings #1 and #2	Repair Retail Center Buildings #1 and #2	50,000					N
<p>Priority 1 = immediate need 5 = less immediate need</p>											

LAST UPDATE JULY 18, 2017 COMPLETE LIST

NHMP Rank	Timeline	Priority	Board Recommendation	Description of Condition	Option 1	Estimated Cost	Option 2	Estimated Cost	Option 3	Estimated Cost	Funds Available Y/N
		1	Board approved as noted 07-18-2017	Repair roofs and repaint all restrooms	Repair roofs and repaint all restrooms	35,000					N
Excluding Kila Field restroom roof.											
Retail restroom completed 2018											
Boat Luanch restroom											
Basin 2 Commercial restroom											

Priority

- 1 = immediate need
- 5 = less immediate need

**PORT OF BROOKINGS HARBOR - DAMAGE INFRASTRUCTURE AND REPAIR LIST
LAST UPDATE JULY 18, 2017 COMPLETE LIST**

NHMP Rank	Timeline	Priority	Board Recommendation	Description of Condition	Option 1	Estimated Cost	Option 2	Estimated Cost	Option 3	Estimated Cost	Funds Available Y/N
		3	Board approved as noted 07-18-2017	Install fence and gates to protect Gear Storage materials and equipment	Fence Gear Storage Areas	75,000					N
		1	Board approved to fence off fuel tank area as funds are available 07-18-2017	Protection of Fuel Tanks and Equipment	Fence Fuel Tank Area	25,000					Y

Priority
1 = immediate need
5 = less immediate need

LAST UPDATE JULY 18, 2017 COMPLETE LIST

NHMP Rank	Timeline	Priority	Board Recommendation	Description of Condition	Option 1	Estimated Cost	Option 2	Estimated Cost	Option 3	Estimated Cost	Funds Available Y/N
		1	Board approved as noted 07-18-2017	Dredge Port Basins	Dredge basins in segments.		Ciam bucket basin edges to reduce dredging costs, use dredge machine where crane cannot reach		Search for other solutions		N
NHMP funding could be available											

Priority

1 = immediate need

5 = less immediate need

LAST UPDATE JULY 18, 2017 COMPLETE LIST

NHMP Rank	Timeline	Priority	Board Recommendation	Description of Condition	Option 1	Estimated Cost	Option 2	Estimated Cost	Option 3	Estimated Cost	Funds Available Y/N
		1	Board approved as noted 07-18-2017	Install water treatment device for Boat Yard	Install water treatment device for Boat Yard	20,000					Y

Priority

1 = immediate need

5 = less immediate need

LAST UPDATE JULY 18, 2017 COMPLETE LIST

NHMP Rank	Timeline	Priority	Board Recommendation	Description of Condition	Option 1	Estimated Cost	Option 2	Estimated Cost	Option 3	Estimated Cost	Funds Available Y/N
		3	Board approved as noted 07-18-2017	Upgrade Port / Tenants Signage	Replace and update billboard signs	15,000					Y
<p>Priority 1 = immediate need 5 = less immediate need</p>											